



Moostash Joe
TOURS

11
day tour



Passport

Tulip Time on Jewels of the Rhine

April 24 - May 4, 2024

Discover the wonder



★ **FREE AIRFARE from Omaha for a Limited Time!**
Call for details!

From \$5,199

per person double occupancy

Enjoy a relaxing and inspiring cruise on the Romantic Rhine, Europe's longest river. Travel during the magic of tulip time aboard your luxurious river ship, visiting iconic ports of call, sampling incredible cuisine and absorbing the local culture. Don't wait! Limited availability!

ITINERARY

April 24 – Welcome / Depart Omaha, NE

Meet us today at one of our many convenient pick-up points as we make our way to Omaha's Eppley Airfield and connect to our overnight flight to Zurich, Switzerland.

April 25 – Arrive in Zurich / Lucerne, Switzerland

Upon arrival in Zurich, transfer to your hotel in Lucerne to begin your Swiss adventure! The afternoon is at leisure to begin discovering your beautiful new surroundings. This evening, join your Cruise representative and the rest of your traveling companions for an included dinner at the hotel. **(D)**

April 26 – Lucerne

This morning we take an included walking tour which highlights the city's landmark, the famous 14th-century Chapel Bridge with its paintings of heroic town events, that crosses the Reuss River. See the 17th-century Renaissance Town Hall and town squares, all set amongst the beautiful backdrop of the Swiss Alps. The remainder of the day is at leisure. **(B)**

April 27 – Lucerne / Basel / Embarkation

Before departing for your ship in Basel, the day is free to enjoy at leisure or join the morning optional excursion to Mt. Pilatus – a mountain overlooking Lucerne that offers a unique alpine experience! This afternoon we travel by motorcoach to Basel, Switzerland for embarkation of your Emerald Cruises luxury Star-Ship. This evening, join your fellow travelers for dinner onboard. **(B, D)**

April 28 – Breisach, Germany

Experience the "tale of two cities": Breisach, Germany and Neuf-Breisach, France, divided by the Rhine. During the guided visit to these two wonderful gems on the Rhine River, you'll pass the main sights and attractions, including the UNESCO World Heritage fortress overlooking Neuf-Breisach. **(B, L, D)**

April 29 – Strasbourg, France

Once docked in Kehl, motorcoaches await to take you across the river to Strasbourg, the capital city of the Alsace Region in France. The guided walking tour takes you along narrow lanes and across footbridges as you discover the Grande Ile, the historical city center and UNESCO World Heritage Site. Known for its medieval black and white timber-framed buildings, picturesque le Petite France, old tanning houses, canals and river locks, the city's star attraction is the ornate cathedral, dominating the main square. This afternoon, the city is yours to explore at your leisure. **(B, L, D)**

April 30 – Ludwigshafen – Schwetzingen, Germany

Relax onboard as the vessel cruises along the Rhine River to Ludwigshafen. Upon arrival we travel to Schwetzingen Palace, famous for the beauty and harmony of its gardens. Visit the interior of the palace, along with the beautiful gardens, maintained in their original design. Today they remain a cultural heritage site of European significance, and contain more than 100 sculptures scattered throughout the grounds. **(B, L, D)**

May 1 – Koblenz, Germany

Begin the day sailing through the spectacular UNESCO World Heritage Rhine Gorge. Pass countless medieval castles and vineyards lining the shores of this section of the river, with photo opportunities around every bend. See the infamous Lorelei statue and Pfalzgrafenstein Castle, built on an island in the middle of the river as a medieval toll station. Continue cruising to the 2000-year-old town of Koblenz, situated at the confluence of the Rhine and Moselle Rivers. Enjoy a walking tour of Koblenz seeing the German Corner where the 2 rivers meet, the Church of Our Lady, and visit the Ehrenbreitstein Fortress by cable car on the opposite side of the river. This fortress was part of the Prussian defense against the French in the 19th century and later used as a headquarters for the American military during WWII. **(B, L, D)**

May 2 – Cologne, Germany

Continue cruising along the Rhine River to Cologne. Founded by the Romans, the city is one of Germany's oldest and is famous for its magnificent UNESCO World Heritage-listed gothic cathedral. Join your local guide for an included walking tour of the city, touching on the historical charm of the Old Town and its Roman history. Traverse the quaint alleyways and see historic monuments alongside modern architecture. The tour concludes at the cathedral, whose twin spires dominate the skyline. A visit to Cologne Botanical Gardens is also included, where a local expert accompanies you through the gardens, explaining about the flora and history of the park. This evening, back onboard, join your Captain for a farewell reception and dinner. **(B, L, D)**

May 3 – Amsterdam, the Netherlands

This morning, depart by motorcoach for an included visit to the world-famous Keukenhof Gardens. Discover why it's called the "Garden of Europe" as you wander along the paths, admiring gorgeous flowers at the peak of tulip season. Unique flower shows in the pavilions along with colorful, artistic floral displays throughout the manicured garden, are sure to please! Return to the ship in the afternoon to explore the city of Amsterdam at your leisure. **(B, L, D)**

May 4 – Depart Amsterdam / Return Home

Bid "auf wiedersehen" to Europe and return home with memories of life enriching experiences from your European adventure and cruise along the Rhine River during tulip time! Upon arrival back in Omaha, say goodbye to your fellow travelers as you arrive back at your initial pick-up points. **(B)**

MEALS INCLUDED:

(B) – Breakfast
(L) – Lunch
(D) – Dinner

ACCOMMODATIONS

Night One – Overnight flight en route to Zurich
Nights Two & Three – Hotel Europe or similar, Lucerne, Switzerland
Nights Four through Ten – Aboard an Emerald Cruises River Ship

Departs: Norfolk, Fremont, Lincoln & Omaha, NE



Moostash Joe
TOURS

Moostash Joe Tours
P.O. Box 969
Fremont, NE 68026

Deposit Due:
\$400 per person

Please see back page for pricing

Cancellation Penalties:

Up until 91 days before departure: \$400 Penalty
 90 days or less before departure: No Refund
 *No refund on any unused portions of the tour

A valid passport is necessary to take this tour.

Book early and save! Call (800) 806-7944 or visit www.mjtour.com

©2023 Moostash Joe Tours

Why River Cruise in Europe with Moostash Joe Tours?

- **FREE AIRFARE from Omaha for a Limited Time!**
Call for details!
- Free, convenient parking and all airport transfers
 - From Norfolk, Fremont, Lincoln & Omaha, NE
- 23 Total Meals
- Seven Nights aboard an Emerald Cruises Star-Ship
- Two Nights and Touring in Lucerne, Switzerland
- Visit Four Countries (Switzerland, France, Germany, the Netherlands)
- First-class service by an English-speaking crew
- All gratuities included
- Explore the magnificent Keukenhof Gardens
- Shore excursions with English-speaking local guides
- Visits to UNESCO World Heritage Sites
- Personal listening device for shore excursions
- All meals included on-board, including a variety of international cuisine
- Complimentary regional wines, beer and soft drinks with on-board lunches and dinners
- Complimentary bottled water in your stateroom
- Complimentary WIFI on-board
- Complimentary bicycles on-board for use ashore
- All port charges included

Tour Price Does Not Include:

- Gratuity for Moostash Joe Tour Director
 - Suggested \$4.00-\$5.00 per person per day
(you may want to tip more for outstanding service)
- Meals other than those stated in the itinerary
- Optional Travel Protection
- Airline Baggage Fees
- Passport and Visa Costs

FREE AIRFARE from Omaha for a Limited Time!



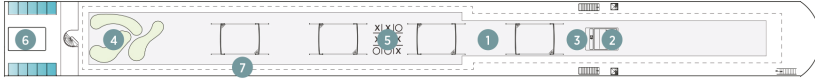
Book early and save! Call (800) 806-7944 or visit www.mjttours.com

©2023 Moostash Joe Tours

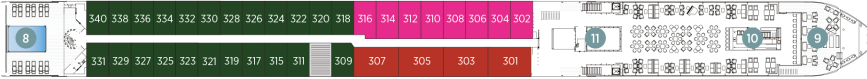
Emerald Cruises Star-Ships

Built: 2014-20 Speed: 15.5 mph Staterooms: 19 Suites: 72 Length: 443 ft. Crew: 47

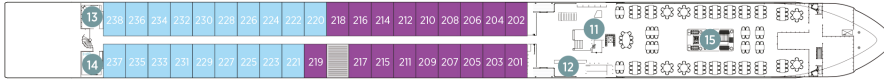
SUN DECK



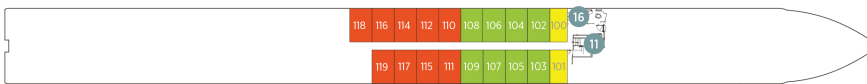
HORIZON DECK



VISTA DECK



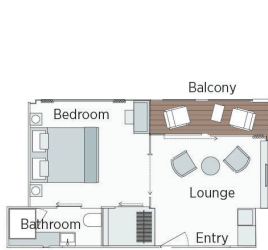
RIVIERA DECK



Public Areas and Ship Amenities

- 1 Sun Deck with Deck Chairs
- 2 Navigation Bridge
- 3 Sky Barbecue
- 4 Golf Putting Green
- 5 Games Area
- 6 Retractable Glass Roof
- 7 Walking Track
- 8 Daytime Pool & Bar / Evening Cinema
- 9 The Terrace
- 10 Horizon Bar and Lounge
- 11 Elevator
- 12 Reception
- 13 Wellness Area
- 14 Fitness Area
- 15 Reflections Restaurant
- 16 Hairdresser

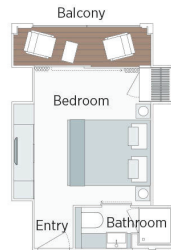
Tulip Time on Jewels of the Rhine



Owner's One-Bedroom Suite

315ft²

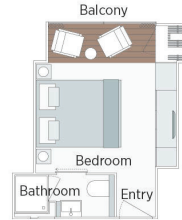
CAT SA



Grand Balcony Suite

210ft²

CAT S



Panorama Balcony Suite

180ft²

CAT A CAT B CAT C



Emerald Stateroom

162ft²

CAT D CAT E

CAT	STATEROOM / SUITE	DECK	PER PERSON TWIN	SINGLE ROOM ADD
E	Emerald Stateroom	Riviera	\$5,199	+ \$3,369
D	Emerald Stateroom	Riviera	\$5,319	+ \$3,445
C	Panorama Balcony Suite	Vista	\$5,919	+ \$3,859
B	Panorama Balcony Suite	Vista	\$6,199	+ \$4,055
A	Panorama Balcony Suite	Horizon	\$6,469	+ \$4,245
S	Grand Balcony Suite	Horizon	\$6,899	N/A
SA	Owner's One-Bedroom Suite	Horizon	\$7,799	N/A

FREE AIRFARE from Omaha for a Limited Time!

For optional Travel Protection rates and details, please visit the FAQ tab on our website, www.mjttours.com.



Moostash Joe
TOURS

Moostash Joe Tours
P.O. Box 969
Fremont, NE 68026



Book early and save! Call (800) 806-7944 or visit www.mjttours.com

©2023 Moostash Joe Tours